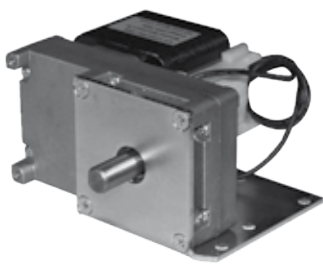
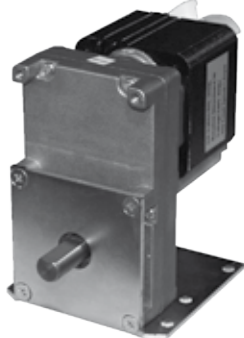


# EASTLAND ELECTRIC MOTORS

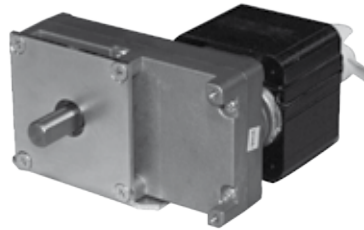
## SHADED POLE GEARED MOTORS



90 degrees to left



Standard position



90 degrees to right



Front mounted without base



Base



With cover: standard position only. Includes lead, plug and on/off switch



With cover: rear view  
 N30179



New unit: made up on request. Used for forward and reverse



New unit with cover: made up on request. Used for forward and reverse

240V, 50Hz, 20W. Comes with 2 inch stack with half inch shaft 1 1/8" long. These are stock items. Other speeds are available upon request. (Comes with thermal protector switch & all with steel gears).

**MODELS: GF-YJF61-50L-722K (3.8RPM) & 390K (7.1RPM) NO LOAD**



With cover. Includes lead, plug and on/off switch



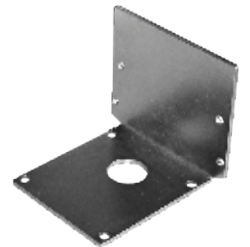
With cover: rear view  
 N30179



Standard position



No base



Base

240V, 50Hz, 15W. Comes with 40mm stack with 8mm shaft 22mm long. These are stock items. Other speeds are available upon request. (Comes with thermal protector switch & all with steel gears).

**MODELS: VF-YJ61-40L-833K (3.3RPM) & 390K (7.1RPM) NO LOAD**

Tel: 03 9879 1798 Fax: 03 9870 5705 Mob: 0407 533 775

Factory 10, 13 Molan Street Ringwood Vic 3134 Australia

Email: info@eastlandelectricmotors.com.au www.eastlandelectricmotors.com.au

