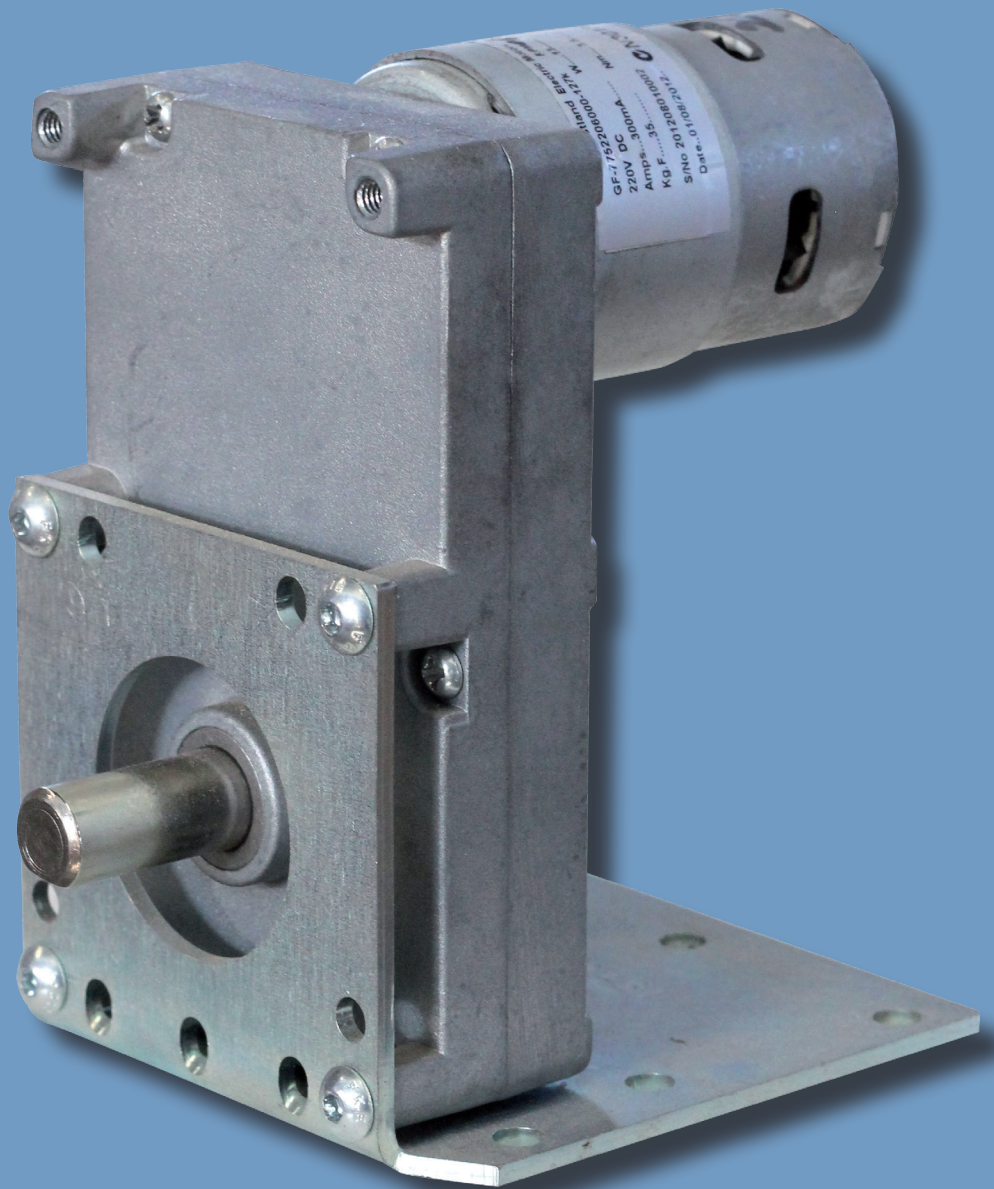
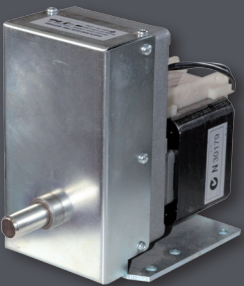
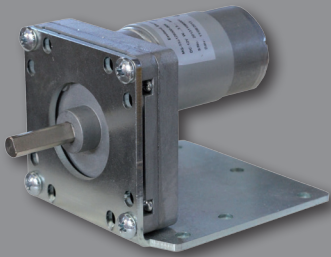
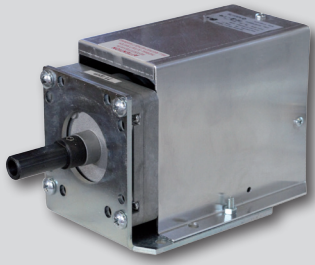


Eastland Electric Motors

Spit & Rotisserie Geared Motors Product Catalogue



February 2017

Tel: 03 9879 1798 Fax: 03 9870 5705 Mob: 0407 533 775

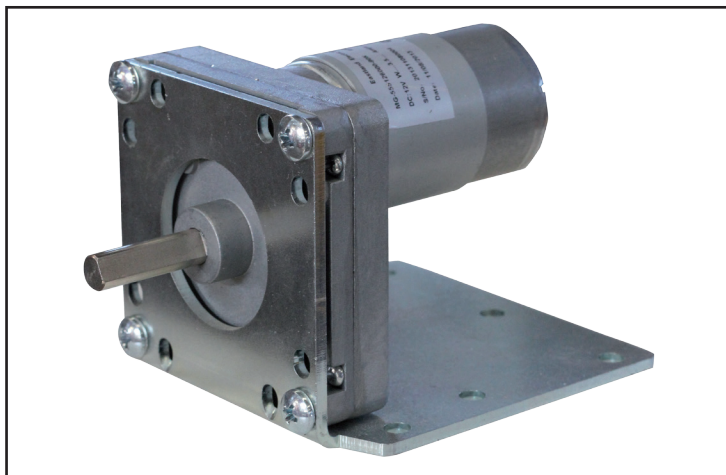
Factory 10, 13 Molan Street Ringwood Vic 3134 Australia

Email: info@eastlandelectricmotors.com.au Website: www.eastlandelectricmotors.com.au

Note: All units come with steel gears.

MG-555 with 8mm shaft

Available in 12V, 24V, 110V and 220V DC.



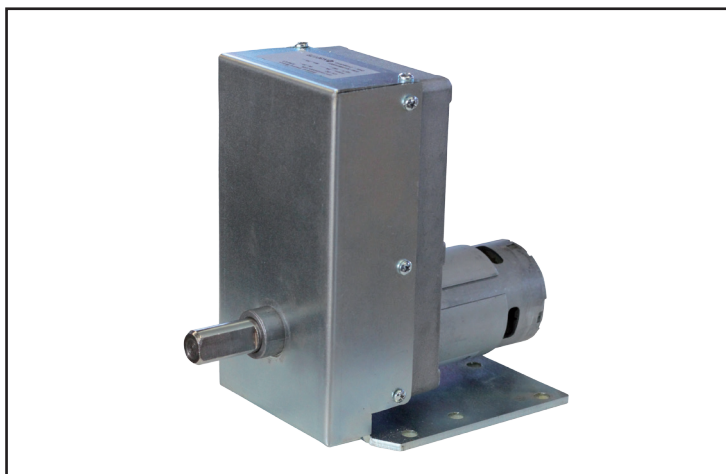
GF-775 with 1/2" shaft

Available in 12V, 24V, 110V and 220V DC.



GF-775 DG with 1/2" shaft

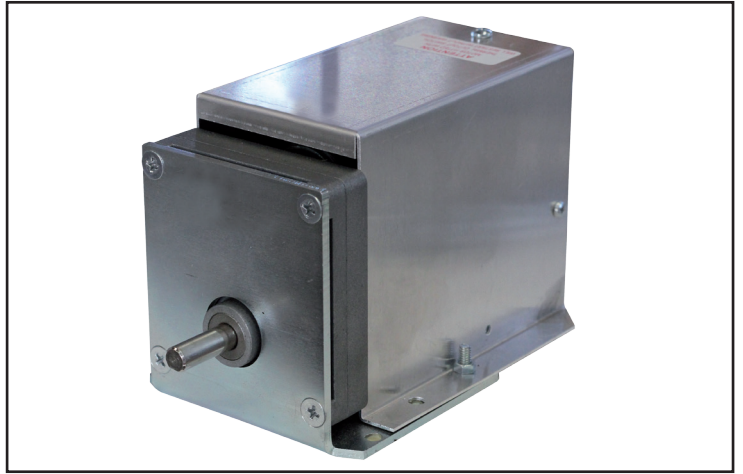
Available in 12V, 24V, 110V and 220V DC.



MG-50 boxed shown with 8mm step up bush to 1/2" (purchase bush separately) 240V AC
Comes with on and off switch, lead and 3-pin plug.



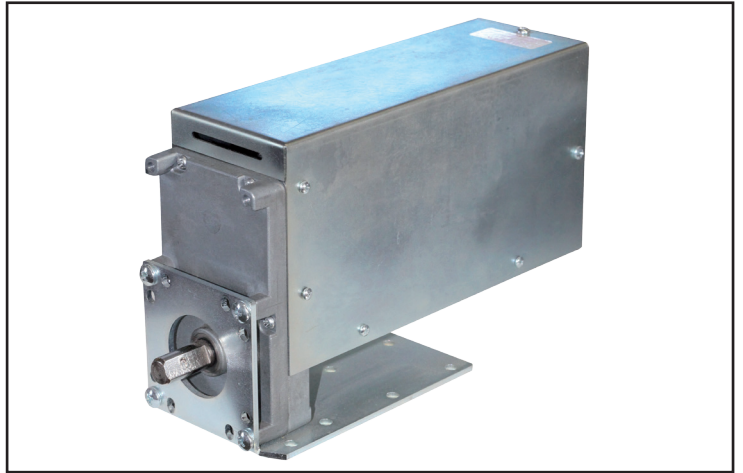
VF-40 boxed with 8mm shaft 240V AC
Comes with on and off switch, lead and 3-pin plug. Range of speeds.



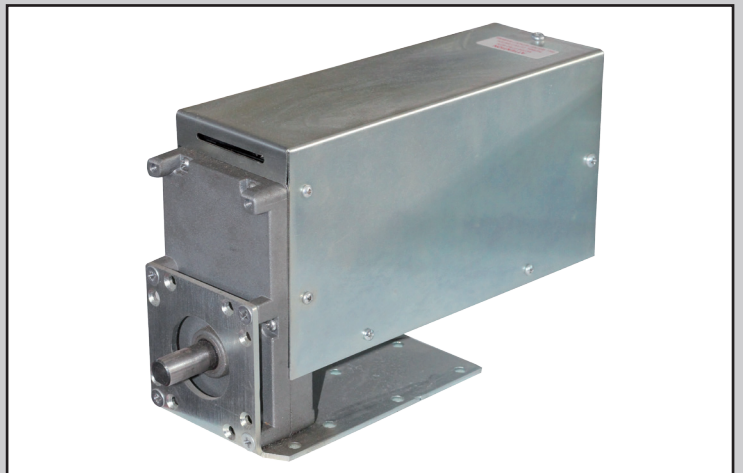
GF-50 boxed with 1/2" shaft 240V AC
Comes with on and off switch, lead and 3-pin plug. Range of speeds.



GF-50 double stack boxed 1/2" shaft 240V AC
Available upon request. Comes with on and off switch, lead and 3-pin plug. Range of speeds.



GF-50 double stack forward/reverse boxed with 1/2" shaft 240V AC
Available upon request. Comes with on and off switch, lead and 3-pin plug. Range of speeds.



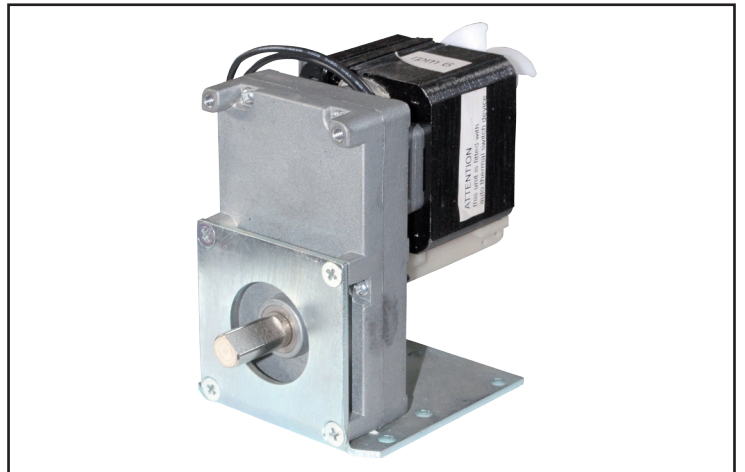
GF-50 DG with 1/2" shaft 240V AC



GF-50 DG boxed with 1/2" shaft 240V AC
Comes with on and off switch, lead and 3-pin plug.



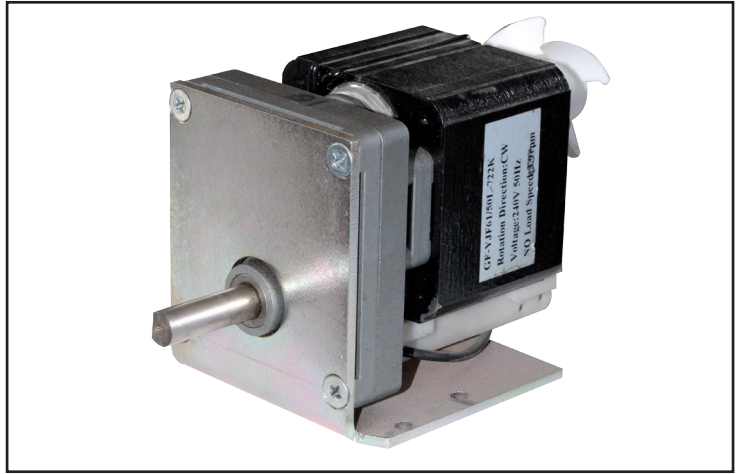
GF-50 standard with 1/2" shaft 240V AC
Output speeds available: 1.4, 2, 3, 6, 10, 15 and 22 rpm.



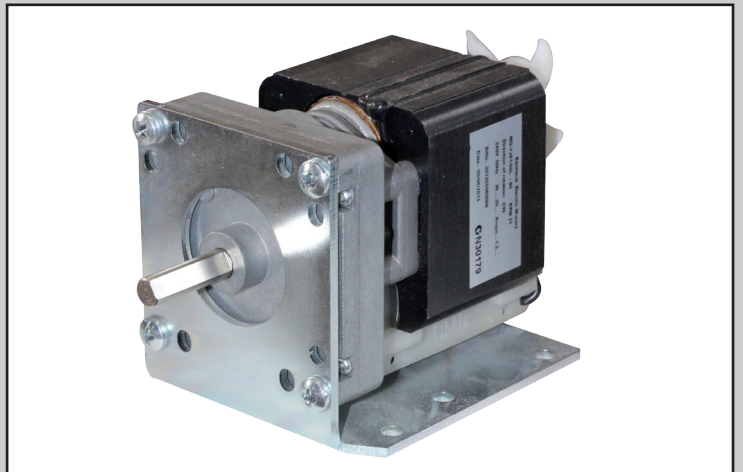
TT-50 with 8mm shaft 240V AC



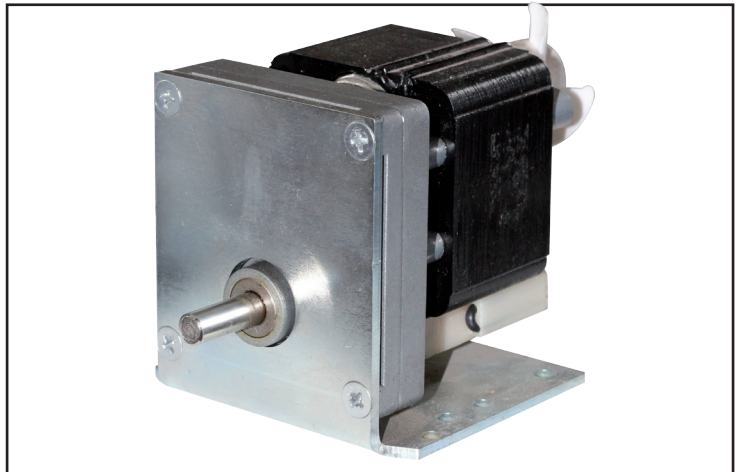
MG-50 with special $\frac{3}{8}$ " shaft 240V AC
 Output speeds available: 3, 6, 10, 15, 20, 71, 115, 120 and 225 rpm.



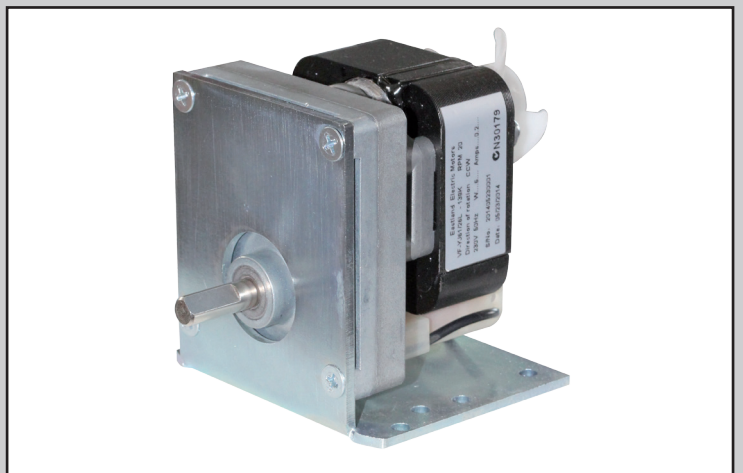
MG-50 with 8mm shaft 240V AC
 Available boxed upon request. Output speeds available: 3, 6, 10, 15, 20, 71, 115, 120 and 225 rpm.



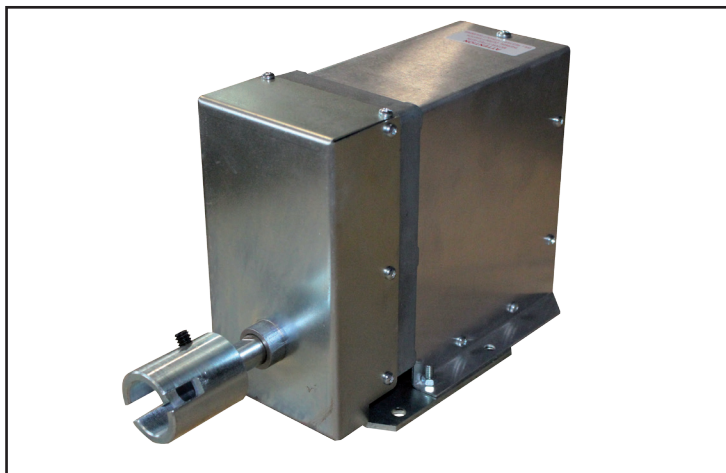
VF-40 with 8mm shaft 2rpm/7rpm 240V AC
 Available boxed upon request. Output speeds available: 3, 6, 10, 15, 20 rpm.



VF-26 with 8mm shaft 240V AC
 Available boxed upon request. Output speeds available: 10, 15, 20 rpm.



Geared Motor GF-50L-722 & 390-DGB Boxed
 240V AC 50Hz with Ferrel Coupling
 Comes with on and off switch, lead and 3-pin plug.



Geared Motor Z5D60-12V & 24V DC 60W



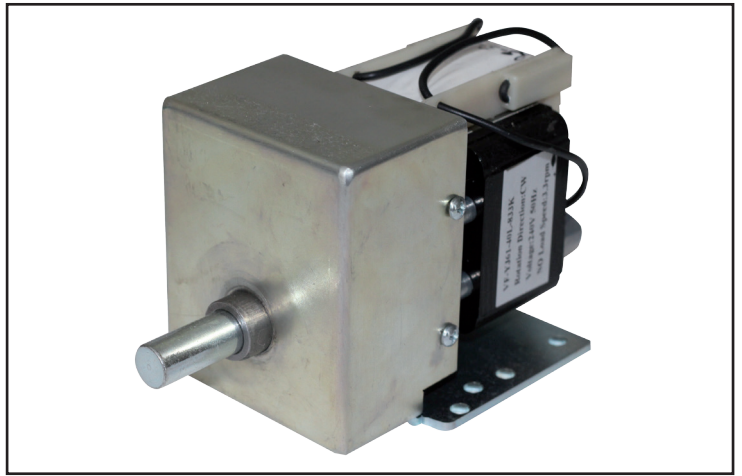
Geared Motor 60GN-CF 60W 240V AC Gear Head
 TEFC foot or face mount (available on request on and off switch, 1.5mt lead, 3 pin plug connection box).



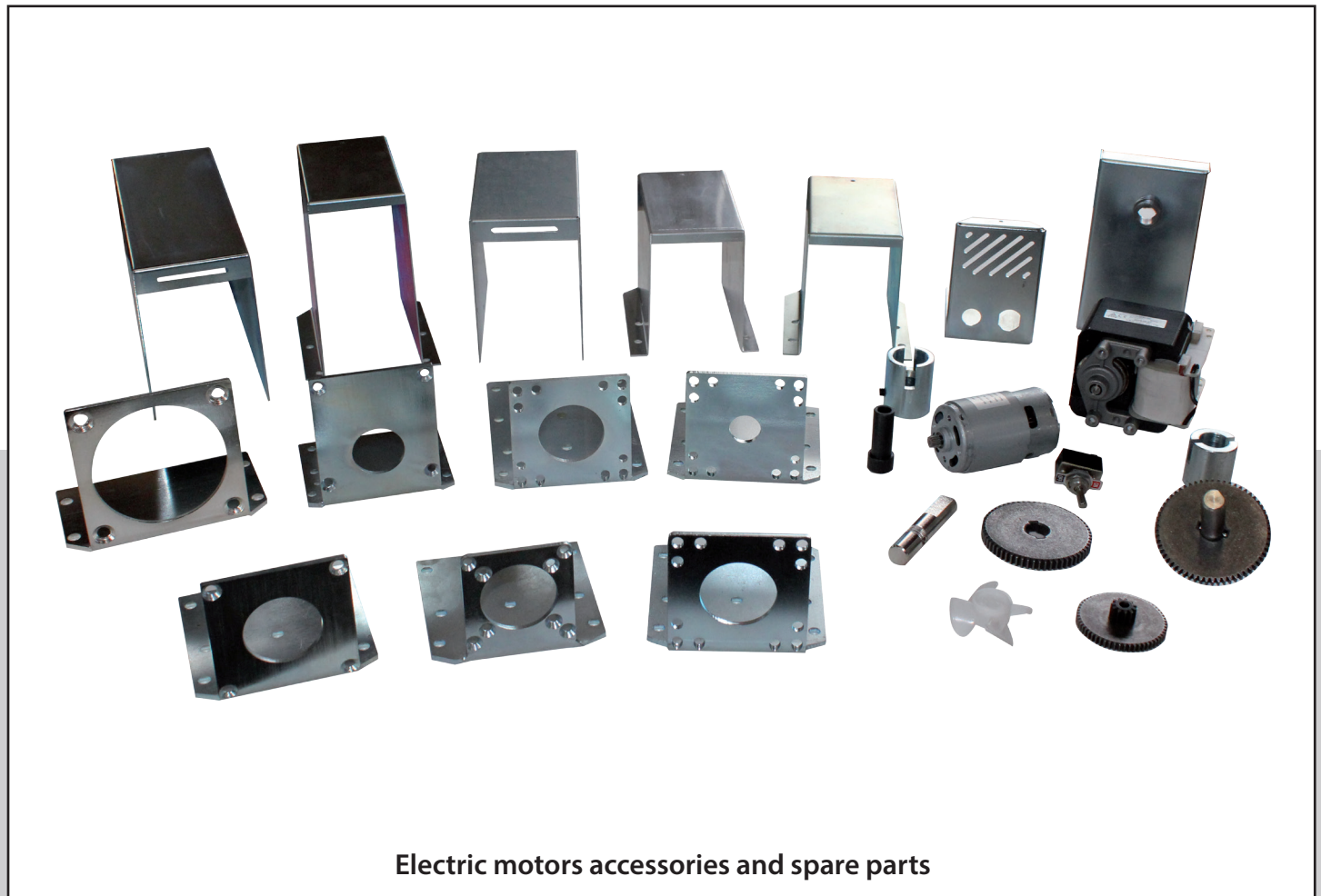
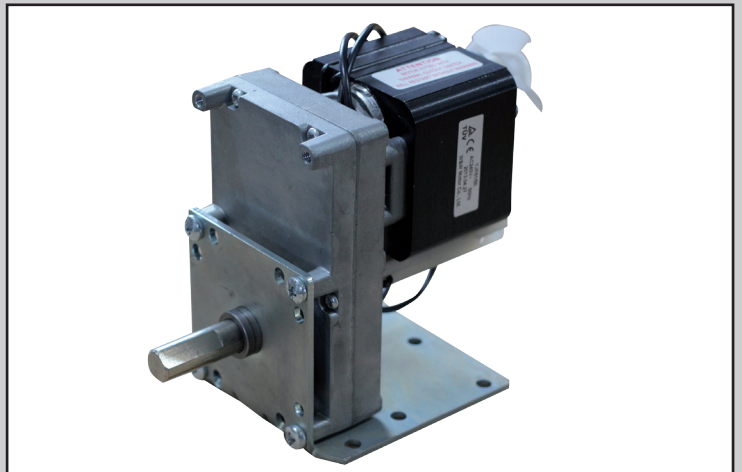
GF-50-390-722-DGB 240V AC
 Comes with on and off switch, lead and 3-pin plug.



VF-40-2rpm 7 Gears 1/2" Shaft 240V AC
(Optional extra on request boxed with lead 3 pin plug.)



GF-50-RL 34x12.7x39H
Suitable for radial loads. Available with different speeds.



Electric motors accessories and spare parts



LIW



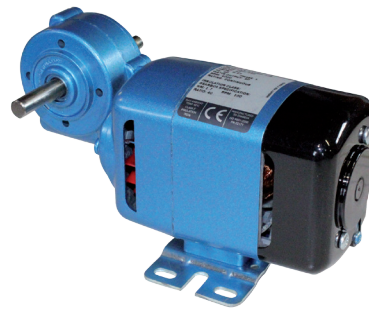
PM



SD11



LWS



SD1

Parvalux electric motors and geared motors
Service and spare parts for Parvalux electric motors.
Range of voltages AC DC.

New electric motors. Geared motors and reconditioned or rebuilt

Speed Controller D1093C 240V or 115V AC
Supply, 50Hz, 1.7 Amps max DC output



Universal contact switches
20 Amps. SP1, SP2 and SP3



60DM12-40N 12V or 24V DC
18W. With base plate. 8mm shaft 27mm long with flat. Range speed.



60TYD 240V
50Hz 10W, Range speed. With base plate. 8mm shaft 27mm long with flat. (Boxed optional extra).



PSG70GN-R750 240V
15W 50Hz. 10mm shaft 30mm long with keyway. Range speed. (Boxed optional extra).



GB-5GN-250K 240V
M51K60GN-CF 50Hz. Range speed.
Base plate, connection box, lead and 3 pin plug.
On and off switch.

