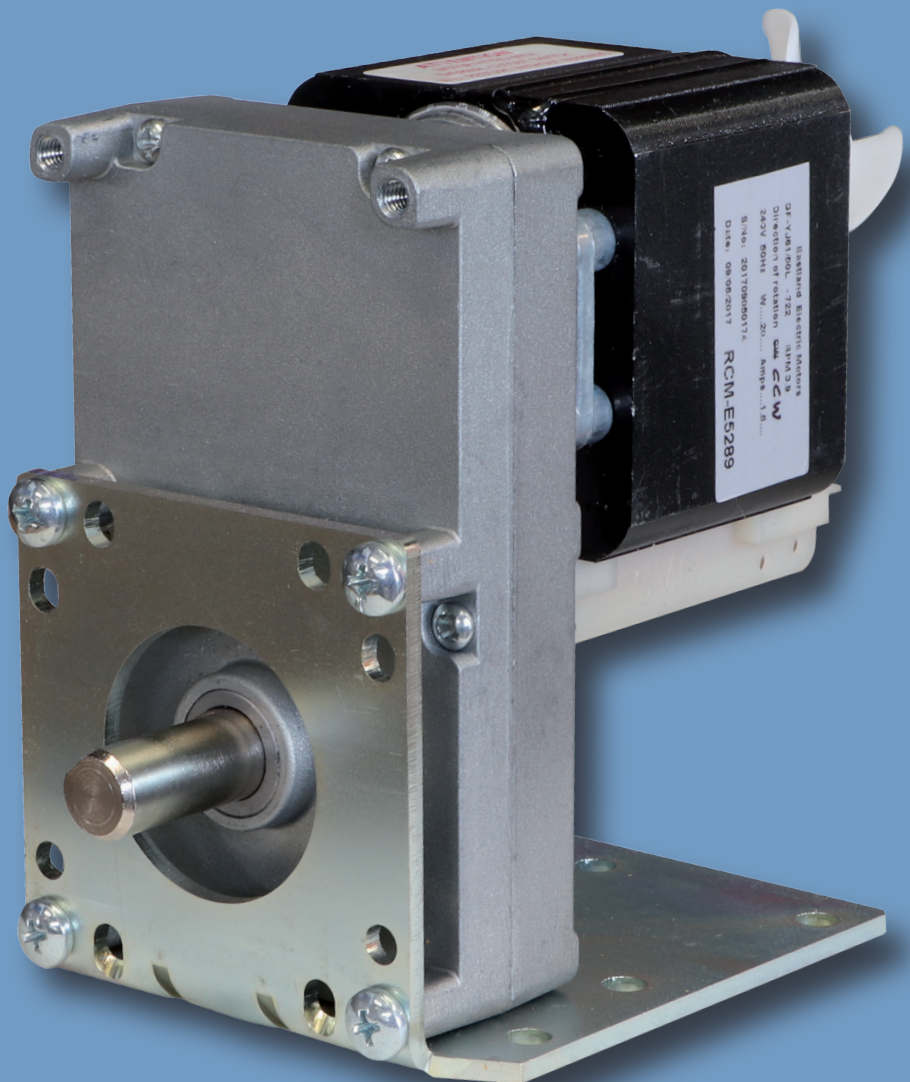
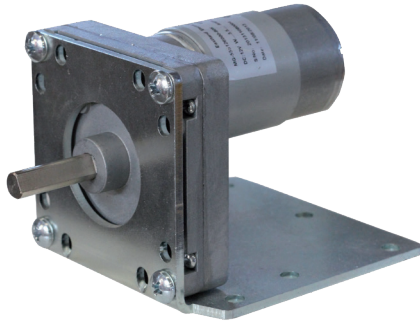


# Spit & Rotisserie Geared Motors Product Catalogue

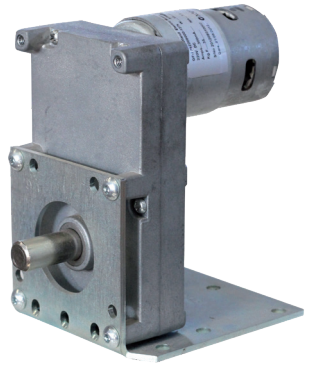


Email: [info@eastlandelectricmotors.com.au](mailto:info@eastlandelectricmotors.com.au) Website: [www.eastlandelectricmotors.com.au](http://www.eastlandelectricmotors.com.au)

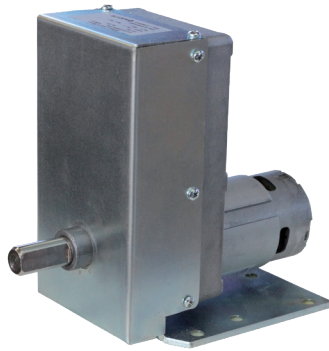
**MG-555 with  
8mm shaft**  
Available in 12V,  
24V, 110V and  
220V DC.



**GF-775 with 1/2" shaft**  
Available in 12V, 24V,  
110V and 220V DC.



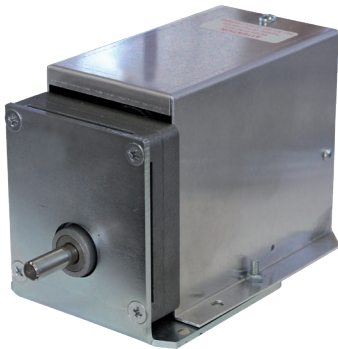
**GF-775 DG with  
1/2" shaft**  
Available in 12V, 24V,  
110V and 220V DC.



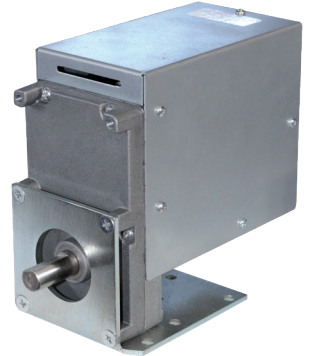
**MG-50 boxed shown  
with 8mm step up  
bush to 1/2" (purchase  
bush separately)**  
240V AC  
Comes with on and  
off switch, lead and  
3-pin plug.



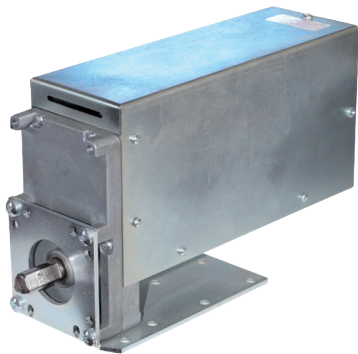
**VF-40 boxed with  
8mm shaft**  
240V AC  
Comes with on and off  
switch, lead and 3-pin  
plug. Range of speeds.



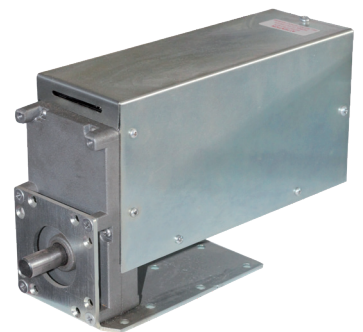
**GF-50 boxed with  
1/2" shaft**  
240V AC  
Comes with on and off  
switch, lead and 3-pin  
plug. Range of speeds.



**GF-50 double stack  
boxed 1/2" shaft**  
240V AC Available  
upon request. Comes  
with on and off switch,  
lead and 3-pin plug.  
Range of speeds.



**GF-50 double stack  
forward/reverse  
boxed with 1/2" shaft**  
240V AC  
Available upon  
request. Comes with  
on and off switch,  
lead and 3-pin plug.  
Range of speeds.



**GF-50 DG with  
1/2" shaft**  
240V AC

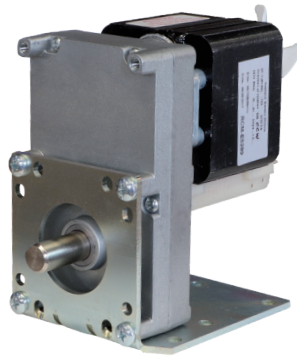


**GF-50 DG boxed  
with 1/2" shaft**  
240V AC  
Comes with on and  
off switch, lead and  
3-pin plug.

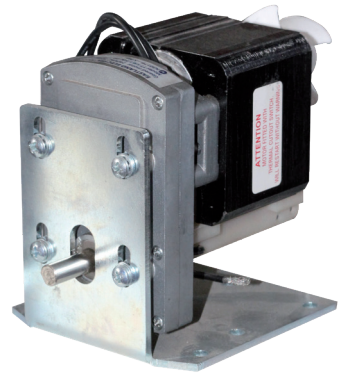




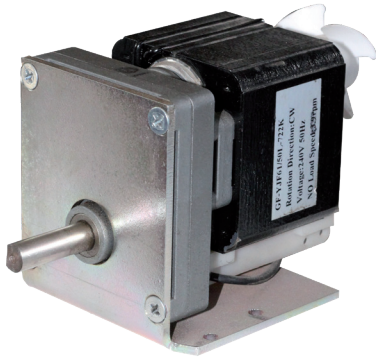
**GF-50 standard**  
with 1/2" shaft  
240V AC  
Output speeds  
available: 1.4, 2,  
3, 6, 10, 15 and 22  
rpm.



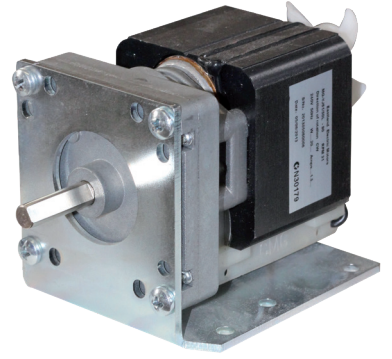
**TT-50 with**  
8mm shaft  
240V AC



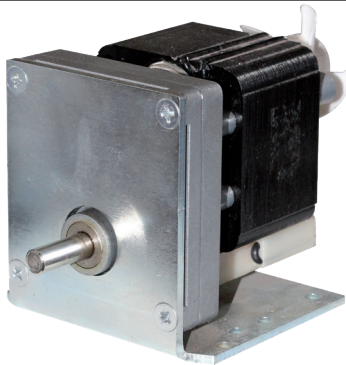
**MG-50 with special**  
3/8" shaft  
240V AC  
Output speeds  
available: 3, 6, 10, 15,  
20, 71, 115, 120 and  
225 rpm.



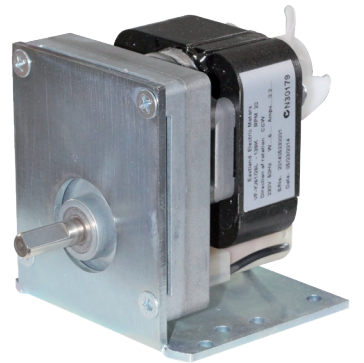
**MG-50 with**  
8mm shaft  
240V AC  
Available boxed  
upon request.  
Output speeds  
available: 3, 6, 10, 15,  
20, 71, 115, 120 and  
225 rpm.



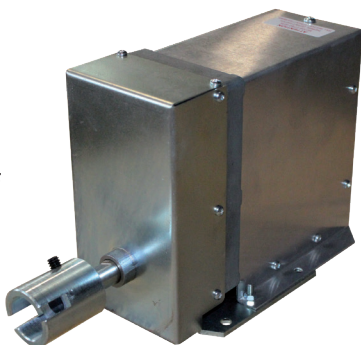
**VF-40 with 8mm**  
shaft 2rpm/7rpm  
240V AC  
Available boxed  
upon request.  
Output speeds  
available: 3, 6, 10,  
15, 20 rpm.



**VF-26 with**  
8mm shaft  
240V AC  
Available boxed  
upon request.  
Output speeds  
available: 10, 15,  
20 rpm.



**Geared Motor**  
**GF-50L-722 &**  
**390-DGB Boxed**  
240V AC 50Hz with  
Ferrel Coupling  
Comes with on and off  
switch, lead and 3-pin  
plug.



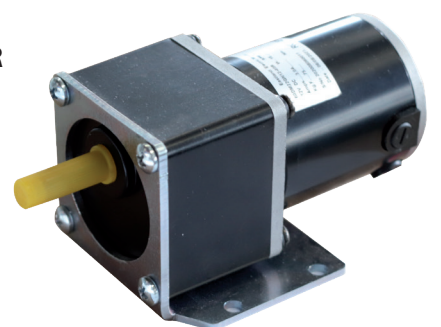
**Geared Motor**  
**Z5D60-12V & 24V**  
**DC 60W**



**Geared Motor**  
**60GN-CF 60W**  
**240V AC Gear**  
**Head**  
TEFC foot or face  
mount (available  
on request on and  
off switch, 1.5mt  
lead, 3 pin plug  
connection box).



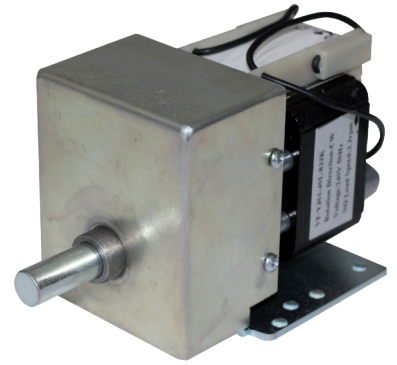
**Geared Motor**  
**60DM22GN12-40R**  
12V DC RPM 20



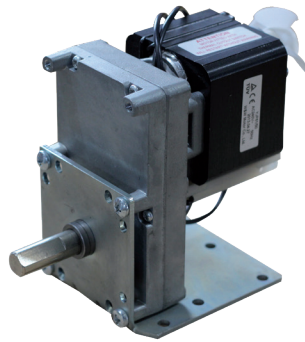
**GF-50-390-722-DGB**  
**240V AC**  
 Comes with on and off switch, lead and 3-pin plug.



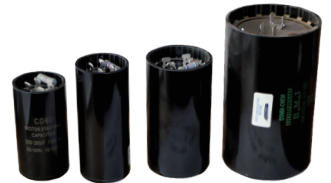
**VF-40-2rpm 7 Gears**  
**1/2" Shaft**  
**240V AC**  
 (Optional extra on request boxed with lead 3 pin plug.)



**GF-50-RL**  
**34x12.7x39H**  
 Suitable for radial loads.  
 Available with different speeds.



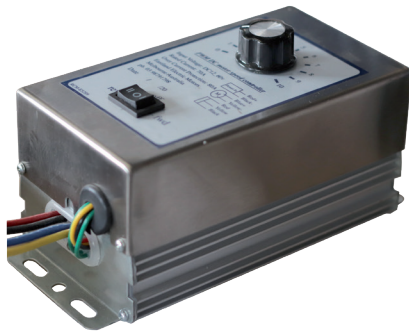
**Capacitors Start**  
 Range of UF's 275V



**Capacitors Run**  
 Range of UF's 440V



**PWM-DC-12-60 V**  
 Speed Controllers.  
 Rated Current 70A.  
 Open or boxed.



**Speed Controller**  
**D1093C**  
 240V or 115V AC  
 Supply 50Hz,  
 1.7 Amps max  
 DC output



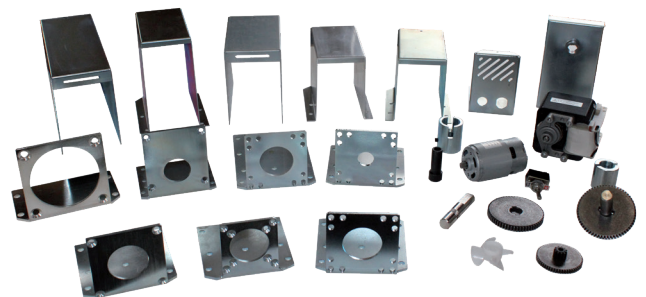
**Universal contact switches 20 Amps.**  
 SP1, SP2 & SP3



**Fan: 60 x 14 x 6mm**



**Electric motors accessories and spare parts**



LIW



PM



SD11



LWS



SD1

**Parvalux electric motors and geared motors**

Service and spare parts for Parvalux electric motors. Range of voltages AC DC.

New electric motors. Geared motors and reconditioned or rebuilt.